



**FPZ, Inc.**  
 2091 N. Port Washington Rd.  
 Grafton, WI 53024  
 Tel. (262) 375-7360  
 Fax (262) 375-7361  
 E-mail USA@FPZ.COM

# REGENERATIVE BLOWERS SCL 30 DH

## Standard features

- Low weight cast aluminum construction.
- Quiet operation with integral inlet and outlet muffling.
- Recognized TEFC motor.
- High efficiency / low noise impeller design.
- No lubrication / maintenance required.
- Allowed ambient: +5 °F to +105 °F.
- Mountable in any plane.

Max. continuous operating Pressure  
 Vacuum

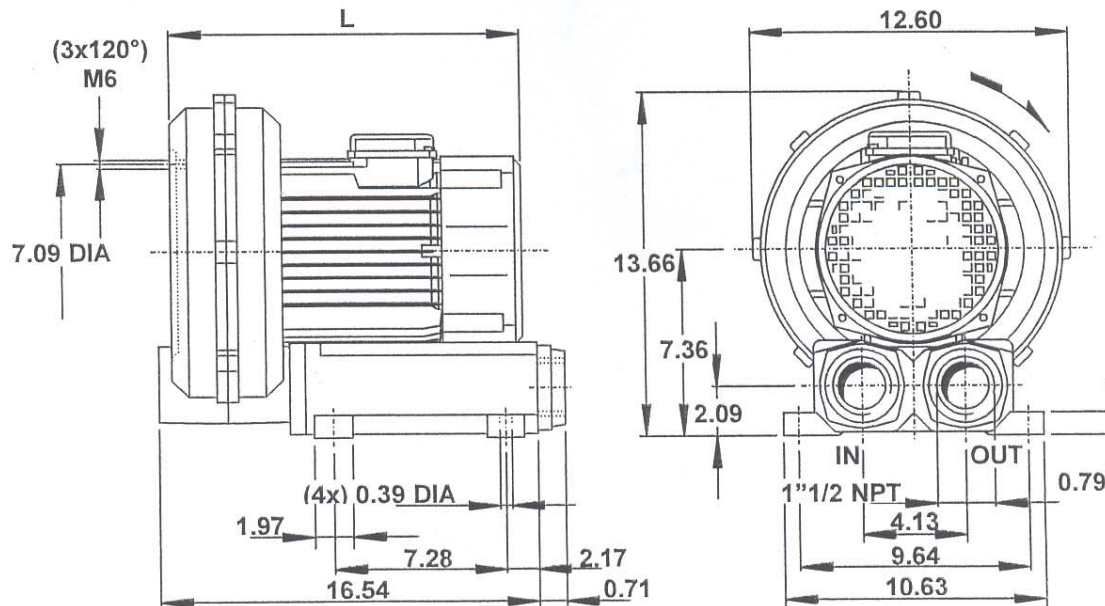
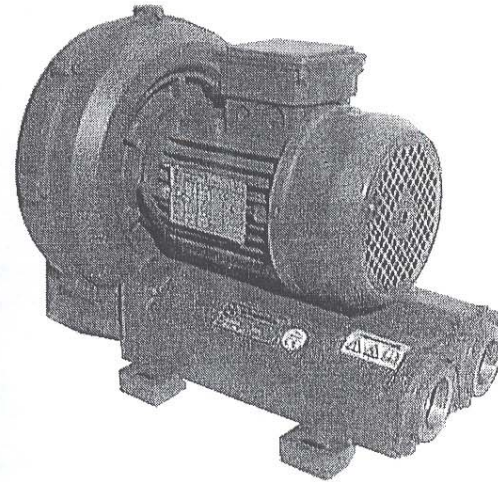
6.9 psig / 191.0 In. WG  
 10.3 In. Hg / 140.0 In. WG

## Options

- Remote drive models (belt or coupling).
- Special voltages.
- Surface treatment or plating.
- Gas tight sealing.
- Special designs available.

## Accessories

- Inlet and/or inline filters.
- Additional inlet/outlet silencers.
- Safety valves.
- Flow converting devices.
- Optional connectors.

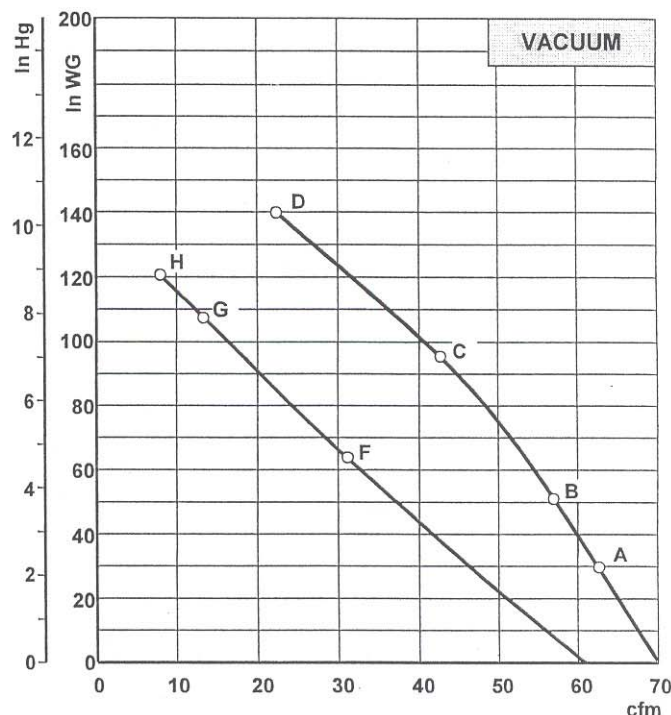
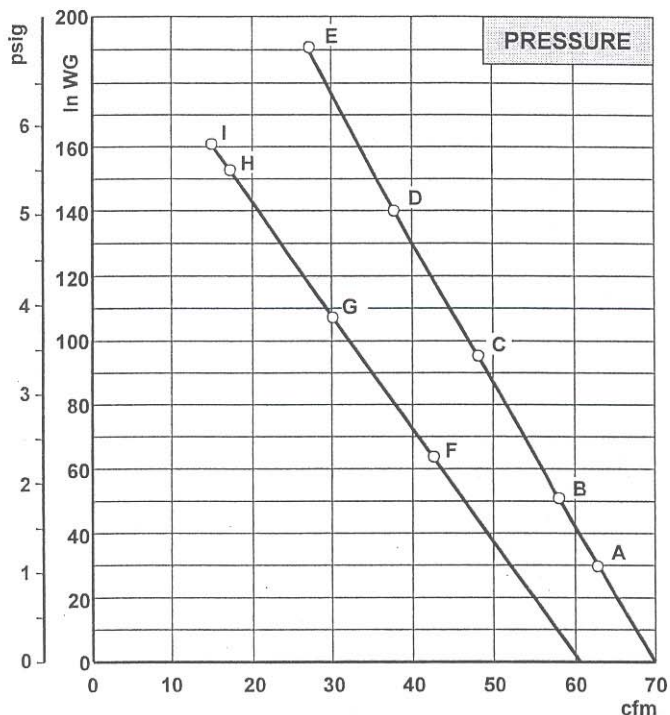


Dimensions in inches

Motor power	Hp 60 Hz	3/4	1	1 1/2	2	3
	Hp 50 Hz	5/8	5/6	1 1/4	1 2/3	2 1/2
L	In.	13.78	14.37	14.37	15.36	15.36
Weight	Lbs.	45.10	51.70	55.00	58.30	64.90



**FPZ, Inc.**  
 2091 N. Port Washington Rd.  
 Grafton, WI, 53024  
 Tel. (262) 375-7360  
 Fax (262) 375-7361  
 E-mail USA@FPZ.COM



**Notes:**

- Curves indicate performance rated for continuous operation.
- Performance data based on ambient / inlet air temperature of 68 °F and barometric pressure of 29.92 In. Hg
- Performance values may vary by ±10%
- Sound level measured at 1 m distance with inlet and outlet piped.
- Specifications are subject to change without notice.

## SCL 30 DH

60 Hz – 3500 rpm										
Reference		A		B		C		D		E
Maximum airflow	cfm	70		70		70		70		70
Maximum continuous pressure	In. WG	30		51		96		140		191
Maximum continuous vacuum	In. Hg	2.2		3.7		7.1		10.3		-
Maximum sound level	dB(A)	70		70		70		70		70
<b>Motor horsepower</b>	<b>Hp</b>	<b>3/4</b>		<b>1</b>		<b>1 1/2</b>		<b>2</b>		<b>3</b>
Standard voltage	Volt	115 or 208-230	208-230/460	115 or 208-230	208-230/460	115 or 208-230	208-230/460	115 or 208-230	208-230/460	115 or 208-230
Phase		1	3	1	3	1	3	1	3	1
Rated F.L. current	Amps	10,0 or 5,5 - 5,0	2,9 - 2,6/1,3	13,2 or 7,3 - 6,6	3,9 - 3,4/1,7	19,8 or 11,0-9,9	5,1 - 4,6/2,3	26,4 or 14,6-13,2	6,9 - 6,2/3,1	36 or 19,8-18,0
Rated locked rotor current	Amps	40 or 22-20	15-13/7	60 or 33-30	23-20/11	99 or 55-50	31-28/14	132 or 73-66	42-38/19	180 or 99-90
Insulation	Class	F		F		F		F		F
50 Hz – 2900 rpm										
Reference		F		G		H		I		
Maximum airflow	cfm	61		61		61		61		
Maximum continuous pressure	In. WG	64		108		153		161		
Maximum continuous vacuum	In. Hg	4.7		7.9		8.9		-		
Maximum sound level	dB(A)	68		68		68		68		
<b>Motor horsepower</b>	<b>Hp</b>	<b>5/6</b>		<b>1 1/4</b>		<b>1 2/3</b>		<b>2 1/2</b>		
Standard voltage	Volt	200 / 400		200 / 400		200 / 400		200 / 400		
Phase		3		3		3		3		
Rated F.L. current	Amps	3,9 / 1,7		5,1 / 2,3		6,9 / 3,1		8,9 / 4,0		
Rated locked rotor current	Amps	23 / 11		31 / 14		42 / 19		54 / 24		
Insulation	Class	F		F		F		F		