

LIFT STATION DIMENSIONS & ORIENTATIONS

DIM-A-	DIM-B-	DIM-C-	DIM-D-	∠ -E-	∠ -F-
4'-0"		5'-0"		90°	270°
6'-0"		7'-0"		90°	270°

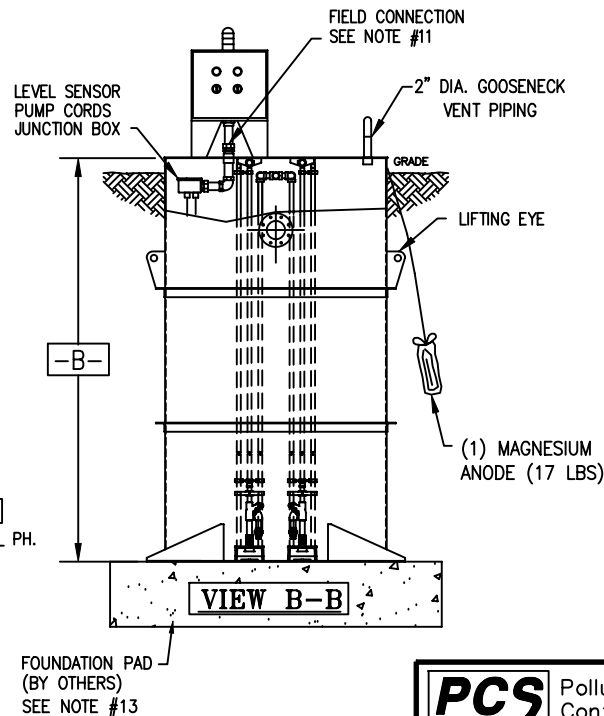
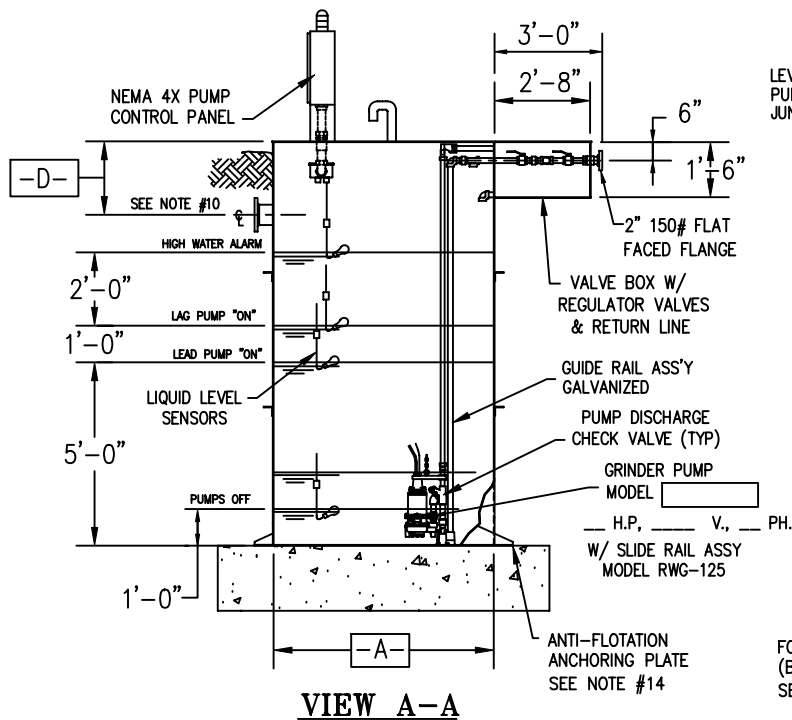
NOTES:

- ALL FLANGES TO BE FF (FLAT FACED SLIP ON) TYPE, 150# ANSI CLASS
- ALL TANK MATERIAL 1/4" THK. A36 CARBON STEEL.
- ALL MOUNTING HARDWARE TO BE 304 STAINLESS STEEL. FABRICATOR TO USE AN ANTI-SEIZE COMPOUND ON STAINLESS STEEL HARDWARE TO PREVENT GALLING AT ASSEMBLY.
- ALL TANK SHELL WELD'S TO BE CONTINUOUS AND WATERTIGHT.
- PROTECTIVE COATING TO BE A COAL TAR EPOXY PAINT ON THE INTERIOR AND EXTERIOR FOR A TOTAL D.F.T. OF 8-12 MILS. FINISHED COLOR TO BE BLACK INSIDE AND OUTSIDE.

SURFACE PREPARATION:

INTERIOR AND EXTERIOR SURFACES TO BE CLEANED TO A NEAR WHITE BLAST (SSPC-SP10)

- (2) GALVANIZED LIFT OUT CHAINS SHALL BE PROVIDED. NO TYPE OF LIFTING EQUIPMENT IS INCLUDED
- PUMP PIPING, GUIDE RAILS AND CHAIN ARE AVAILABLE IN STN. STL OPTION BUT MUST BE SPECIFIED AT TIME OF ORDER
- ALL PIPING TO BE SCH.40 GALVANIZED STEEL PIPE.
- PUMP LIFT OUT GUIDE RAILS TO SCH. 40 GALVANIZED STEEL.
- DIMENSIONS IN BLOCKS TO BE VERIFIED IF AT TIME OF APPROVAL.
- CONTROL PANEL TO BE SHIPPED LOOSE FOR FIELD CONNECTION TO LID AND CONDUIT FROM JUNCTION BOX.
- ENGINEER/CONTRACTOR TO VERIFY/CONFIRM ANGULAR ORIENTATION OF INLET CONNECTION IN PLAN VIEW.
- FOUNDATION PAD MATERIALS AND DESIGN IS DETERMINED BY THE PROJECT ENGINEER AFTER SOIL ANALYSIS IS COMPLETED
- ANCHORS FOR ANCHORING OF TANK TO THE FOUNDATION PAD IS TO BE SUPPLIED BY OTHERS
- LEVEL SENSOR HEIGHT IS ADJUSTABLE FOR SPECIFIC SITE CONDITIONS AND PUMP CAPACITIES.



Pollution Control Systems, Inc.

5827 Happy Hollow Rd, Suite 1B
 Milford, Ohio 45150
 (513) 831-1165
 E-mail PolConSys @ aol.com

STEEL LIFT STATION -W/ GRINDER PUMPS AND DISCHARGE VALVE BOX

TANK WEIGHT EMPTY: #
 TANK WEIGHT OPERATING: #

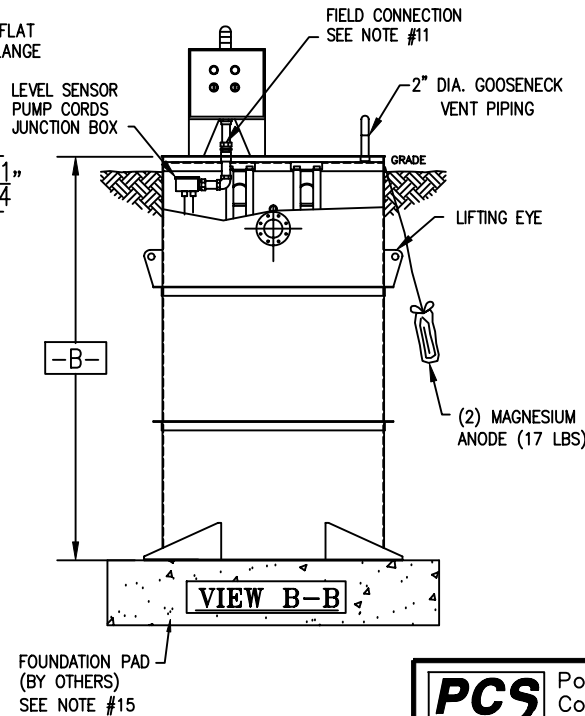
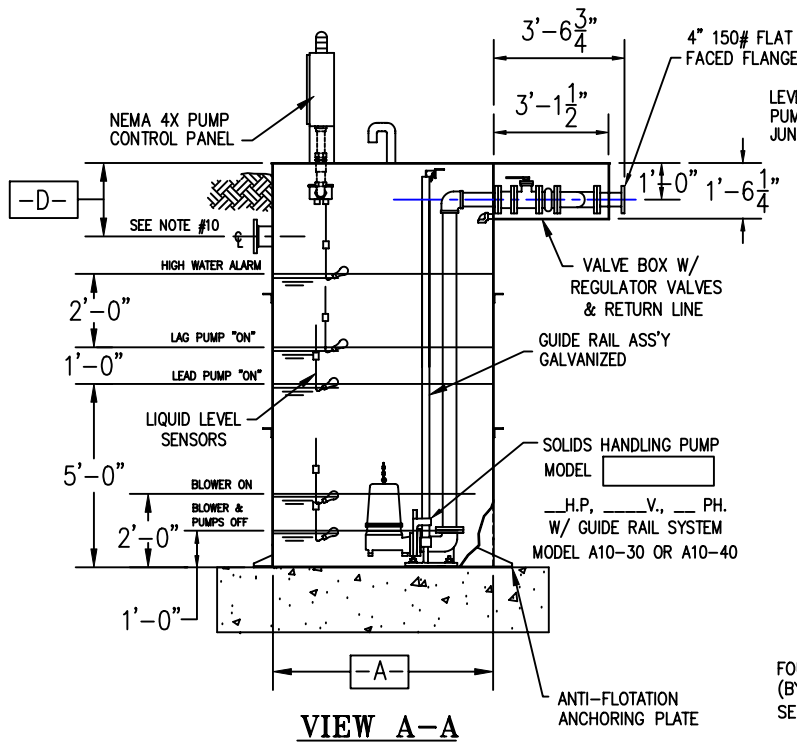
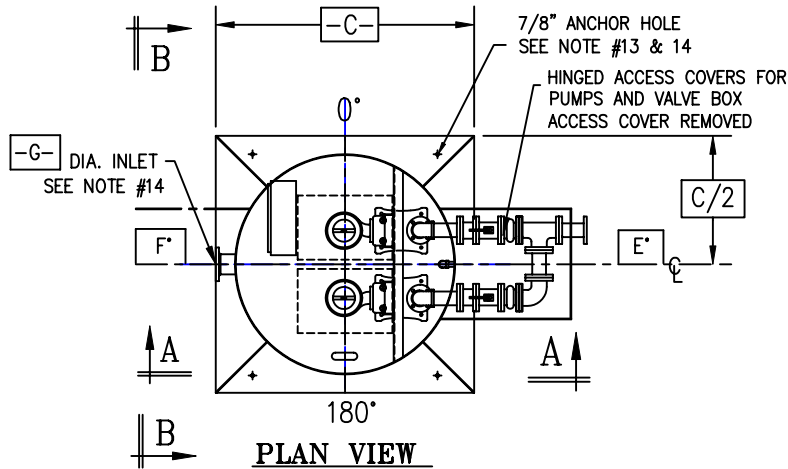
REV.	DATE	DESCRIPTION	APPROV.

THIS DRAWING CONTAINS INFORMATION THAT IS PROPRIETARY TO POLLUTION CONTROL SYSTEMS AND IS NOT TO BE USED WRITTEN PERMISSION OF POLLUTION CONTROL SYSTEMS INC.

SCALE: PLOT 3/16"=1'		QUOTE NO.	PROJECT NO.
DRAWN BY: JJM	DATE: 3/27/02	SHEET	DRAWING NO.
CHECKED BY: JJM	DATE: 3/27/02	1 OF 1	LS1-STL-G-VB

LIFT STATION DIMENSIONS & ORIENTATIONS

DIM-A-	DIM-B-	DIM-C-	DIM-D-	∠ -E-	∠ -F-	DIA.-G-
4'-0"		5'-0"		90°	270°	
6'-0"		7'-0"		90°	270°	



NOTES:

- ALL FLANGES TO BE FF (FLAT FACED SLIP ON) TYPE, 150# ANSI CLASS
- ALL TANK MATERIAL 1/4" THK. A36 CARBON STEEL.
- ALL MOUNTING HARDWARE TO BE 304 STAINLESS STEEL. FABRICATOR TO USE AN ANTI-SEIZE COMPOUND ON STAINLESS STEEL HARDWARE TO PREVENT GALLING AT ASSEMBLY.
- ALL TANK SHELL WELD'S TO BE CONTINUOUS AND WATERTIGHT.
- PROTECTIVE COATING TO BE A COAL TAR EPOXY PAINT ON THE INTERIOR AND EXTERIOR FOR A TOTAL D.F.T. OF 8-12 MILS. FINISHED COLOR TO BE BLACK INSIDE AND OUTSIDE.
SURFACE PREPARATION:
INTERIOR AND EXTERIOR SURFACES TO BE CLEANED TO A NEAR WHITE BLAST (SSPC-SP10)
- (2) GALVANIZED LIFT OUT CHAINS SHALL BE PROVIDED. NO TYPE OF LIFTING EQUIPMENT IS INCLUDED
- PUMP PIPING AND GUIDE RAILS ARE AVAILABLE IN STN. STL AS AN OPTION BUT MUST BE SPECIFIED AT TIME OF ORDER
- ALL PIPING TO BE SCH.40 BLACK STEEL PAINTED.
- PUMP LIFT OUT GUIDE RAILS TO SCH. 40 GALVANIZED STEEL.
- DIMENSIONS IN BLOCKS TO BE VERIFIED IF AT TIME OF APPROVAL.
- CONTROL PANEL TO BE SHIPPED LOOSE FOR FIELD CONNECTION TO LID AND CONDUIT FROM JUNCTION BOX.
- ENGINEER/CONTRACTOR TO VERIFY/CONFIRM ANGULAR ORIENTATION OF INLET CONNECTION IN PLAN VIEW.
- FOUNDATION PAD MATERIALS AND DESIGN IS DETERMINED BY THE PROJECT ENGINEER AFTER SOIL ANALYSIS IS COMPLETED
- ANCHORS FOR ANCHORING OF TANK TO THE FOUNDATION PAD IS TO BE SUPPLIED BY OTHERS



Pollution Control Systems, Inc.

5827 Happy Hollow Rd, Suite 1B
Milford, Ohio 45150
(513) 831-1165
E-mail PolConSys @ aol.com

STEEL LIFT STATION -W/ FLANGED PUMPS
A-10 SERIES BASE AND DISCHARGE VALVE BOX

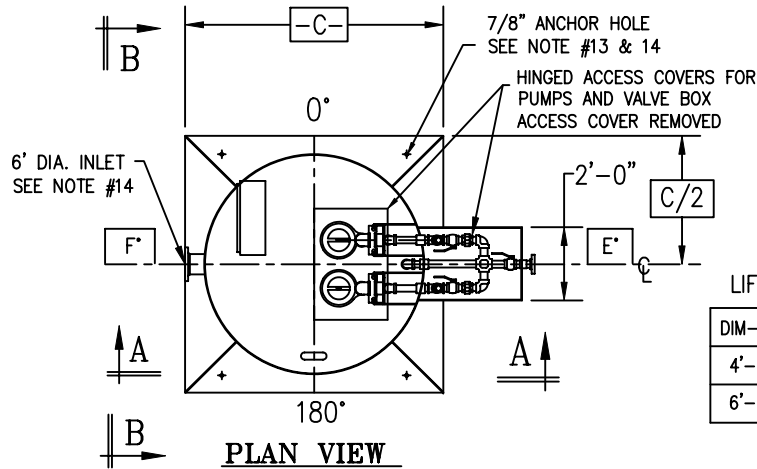
SCALE: PLOT 3/16"=1'	QUOTE NO.	PROJECT NO.
DRAWN BY: JJM	DATE: 3/27/02	SHEET
CHECKED BY: JJM	DATE: 3/27/02	1 OF 1
		LS2-STL-S-VB

TANK WEIGHT EMPTY: #

TANK WEIGHT OPERATING: #

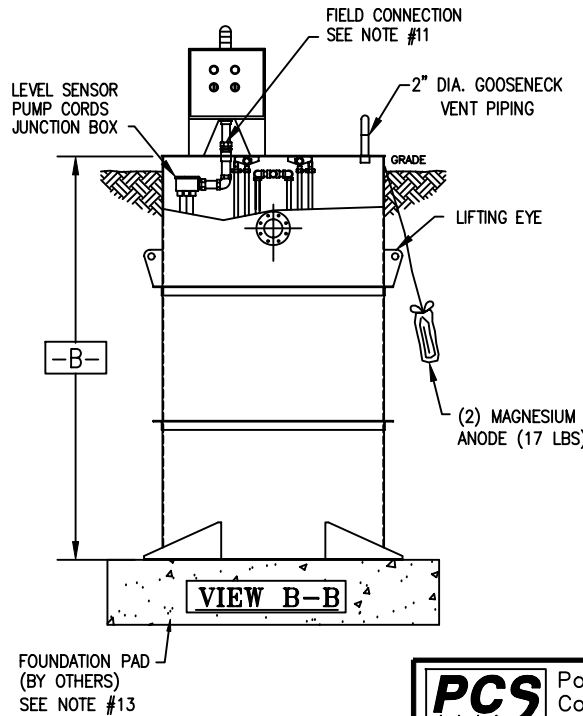
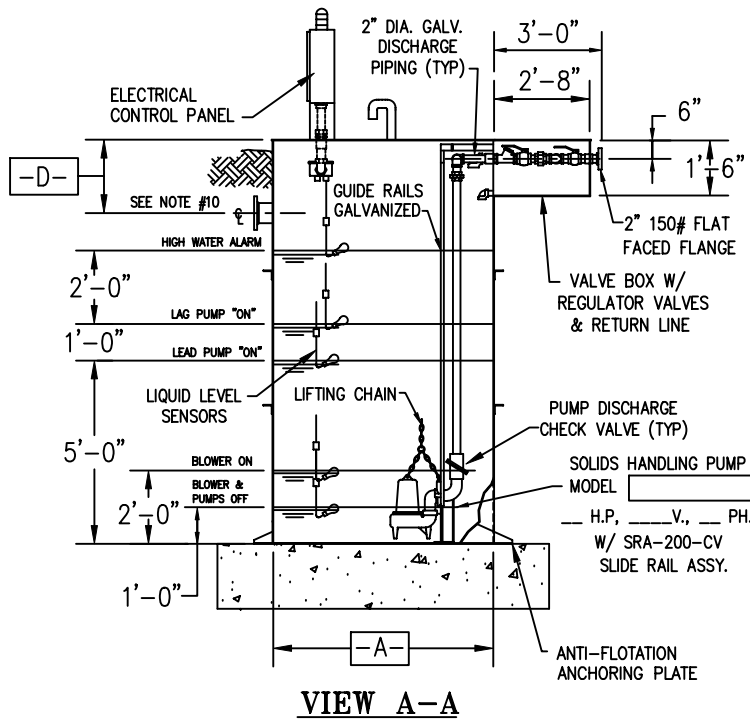
REV.	DATE	DESCRIPTION	APPROV.

THIS DRAWING CONTAINS INFORMATION THAT IS PROPRIETARY TO POLLUTION CONTROL SYSTEMS AND IS NOT TO BE USED WITHOUT PERMISSION OF POLLUTION CONTROL SYSTEMS INC.



LIFT STATION DIMENSIONS & ORIENTATIONS

DIM-A-	DIM-B-	DIM-C-	DIM-D-	∠ -E-	∠ -F-
4'-0"		5'-0"		90°	270°
6'-0"		7'-0"		90°	270°



NOTES:

- ALL FLANGES TO BE FF (FLAT FACED SLIP ON) TYPE, 150# ANSI CLASS
- ALL TANK MATERIAL 1/4" THK. A36 CARBON STEEL.
- ALL MOUNTING HARDWARE TO BE 304 STAINLESS STEEL. FABRICATOR TO USE AN ANTI-SEIZE COMPOUND ON STAINLESS STEEL HARDWARE TO PREVENT GALLING AT ASSEMBLY.
- ALL TANK SHELL WELD'S TO BE CONTINUOUS AND WATERTIGHT.
- PROTECTIVE COATING TO BE TNEDEC 460465 H.B. COAL TAR TNECOL PAINT (INSIDE AND OUT) FOR A TOTAL D.F.T. OF 8-12 MILS. FINISHED COLOR TO BE BLACK INSIDE AND OUTSIDE.
SURFACE PREPARATION:
INTERIOR AND EXTERIOR SURFACES TO BE CLEANED TO A COMMERCIAL BLAST (SSPC-SP6)
- (2) GALVANIZED LIFT OUT CHAINS SHALL BE PROVIDED. NO TYPE OF LIFTING EQUIPMENT IS INCLUDED
- PUMP PIPING, GUIDE RAILS AND LIFTING CHAIN ARE AVAILABLE IN STN. STL AS AN OPTION BUT MUST BE SPECIFIED AT TIME OF ORDER
- ALL PIPING TO BE SCH.40 BLACK GALVANIZED STEEL.
- PUMP LIFT OUT GUIDE RAILS TO SCH. 40 GALVANIZED STEEL.
- DIMENSIONS IN BLOCKS TO BE VERIFIED IF AT TIME OF APPROVAL, TANKAGE AND PIPING WILL BE FABRICATED TO THE DIMENSIONS AND ORIENTATION AS SHOWN UNLESS NOTED ON APPROVAL.
- CONTROL PANEL TO BE SHIPPED LOOSE FOR FIELD CONNECTION TO LID AND CONDUIT FROM JUNCTION BOX.
- ENGINEER/CONTRACTOR TO VERIFY/CONFIRM ANGULAR ORIENTATION OF INLET CONNECTION IN PLAN VIEW.
- FOUNDATION PAD MATERIALS AND DESIGN IS DETERMINED BY THE PROJECT ENGINEER AFTER SOIL ANALYSIS IS COMPLETED
- ANCHORS FOR ANCHORING OF TANK TO THE FOUNDATION PAD IS TO BE SUPPLIED BY OTHERS

TANK WEIGHT EMPTY: #
TANK WEIGHT OPERATING: #

REV.	DATE	DESCRIPTION	APPROV.

PCS Pollution Control Systems, Inc.
5827 Happy Hollow Rd, Suite 1B
Milford, Ohio 45150
(513) 831-1165
E-mail PolConSys @ aol.com

THIS DRAWING CONTAINS INFORMATION THAT IS PROPRIETARY TO POLLUTION CONTROL SYSTEMS AND IS NOT TO BE USED WITHOUT WRITTEN PERMISSION OF POLLUTION CONTROL SYSTEMS INC.

STEEL LIFT STATION -W/ NPT SEWAGE PUMPS
W/ GUIDE RAILS AND DISCHARGE VALVE BOX

SCALE: PLOT 3/16"=1'		QUOTE NO.	PROJECT NO.
DRAWN BY: JJM	DATE: 3/27/02	SHEET	DRAWING NO.
CHECKED BY: JJM	DATE: 3/27/02	1 OF 1	LS3-STL-S-VB