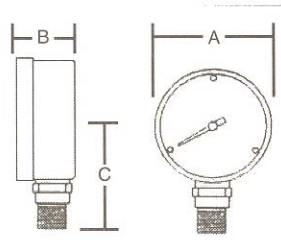
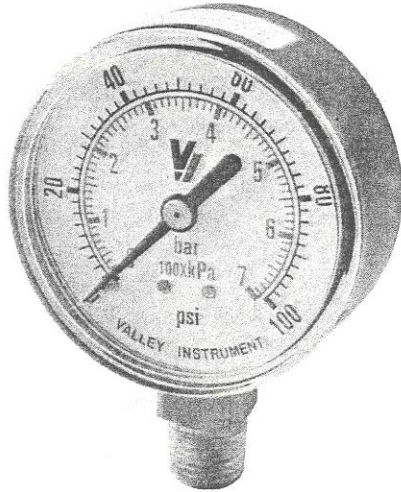


AIR PRESSURE GAUGE



MODEL	PSI	A	B	C
G-1	0-15	2.469"	1.187"	1.828"
G-2	0-30	2.469"	1.187"	1.828"

FEATURES



These gauges are designed for use with gas, oil, and water or any medium not corrosive to brass or bronze.

MOVEMENT	Brass
BOURDON TUBE	C-Shaped in copper alloy up to 600 psi and Helical in phosphor bronze above 600 psi
POINTER	Black enameled aluminum
DIAL	White Aluminum
WINDOW	Acrylic
CASE MATERIAL	Steel, Black Painted
CONNECTION MATERIAL	Brass
CONNECTION SIZE	¼" MNPT on 2-1/2" sizes
ACCURACY	ASME/ANSI B40.1 Grade B (3-2-3%)



**Pollution
Control
Systems, Inc**

5827 Happy Hollow Rd. Suite 1-B
Milford, OH 45150-1830
Tel: (513) 831-1165 Fax: (513) 965-4812
E-mail: Polconsys@aol.com
www.PollutionControlSystem.com